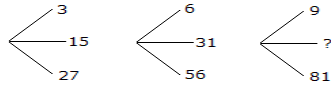


Public Service Commission
Section Officer IQ Test
Set 3

1. In each of the following questions find out the alternative which will replace the question mark.
Conference : Chairman :: Newspaper : ?
A. Reporter B. Distribution C. Printer D. Editor
2. Which of the following diagrams indicates the best relation between Author, Lawyer and Singer ?



3. Look at this series: 22, 21, 23, 22, 24, 23, ... What number should come next?
A. 22 B. 24 C. 25 D. 26
4. Which one will replace the question mark ?



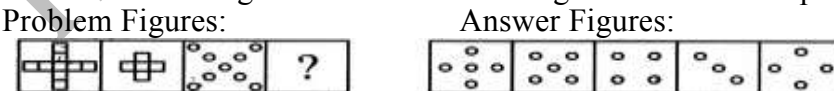
- A. 45 B. 41 C. 32 D. 40
5. A is 3 years older to B and 3 years younger to C, while B and D are twins. How many years older is C to D?
A. 2 B. 3 C. 6 D. 12
6. Rohit walked 25 m towards south. Then he turned to his left and walked 20 m. He then turned to his left and walked 25 m. He again turned to his right and walked 15 m. At what distance is he from the starting point and in which direction?
A. 35 m East B. 35 m North C. 30 m West D. 45 m East
7. A is 30% more efficient than B. How much time will they, working together, take to complete a job which A alone could have done in 23 days?
A. 11 days B. 13 days C. $20\frac{3}{17}$ days D. None of these
8. Find the odd man out
6, 9, 15, 21, 24, 28, 30
A. 28 B. 21 C. 24 D. 30
9. A and B together have Rs. 1210. If $\frac{4}{15}$ of A's amount is equal to $\frac{2}{5}$ of B's amount, how much amount does B have?
A. Rs. 460 B. Rs. 484 C. Rs. 550 D. Rs. 664
10. Find out which of the figures (1), (2), (3) and (4) can be formed from the pieces given in figure (X).



- A. 1 B. 2 C. 3 D. 4
11. Select the alternative which represents three out of the five alternative figures which when fitted into each other would form a complete square.



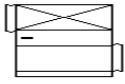
- A. 124 B. 125 C. 234 D. 245
12. Select a suitable figure from the Answer Figures that would replace the question mark (?).



- A. 1 B. 2 C. 3 D. 4
13. Select a figure from amongst the Answer Figures which will continue the same series as established by the five Problem Figures.



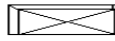
- (A) (B) (C) (D) (E) (1) (2) (3) (4) (5)
- A. 1 B. 2 C. 3 D. 4
14. The figure given on the left hand side in each of the following questions is folded to form a box. Choose from the alternatives (1), (2), (3) and (4) the boxes that is similar to the box formed.



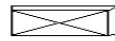
(1)



(2)



(3)



(4)

A. 1 only

B. 2 only

C. 3 only

D. 4 only

15. In these series, you will be looking at both the letter pattern and the number pattern. Fill the blank in the middle of the series or end of the series.

A. GRR

B. GSS

C. ISS

D. ITT

16. Here are some words translated from an artificial language.

agnoscrenia means poisonous spider

delanocrenia means poisonous snake

agnosdeery means brown spider

Which word could mean "black widow spider"?

A. deeryclostagnos

B. agnosdelano

C. agnosvitriblunin

D. trymuttiagnos

17. Here are some words translated from an artificial language.

agnoscrenia means poisonous spider

delanocrenia means poisonous snake

agnosdeery means brown spider

Which word could mean "black widow spider"?

A. deeryclostagnos

B. agnosdelano

C. agnosvitriblunin

D. trymuttiagnos

18. If $2994 \div 14.5 = 172$, then $29.94 \div 1.45 = ?$

A. 0.172

B. 1.72

C. 17.2

D. 172

19. Select the figure which satisfies the same conditions of placement of the dots as in Figure-X.



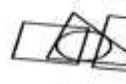
(X)



(1)



(2)



(3)



(4)

A. 1

B. 2

C. 3

D. 4

20. Find the number of triangles in the given figure.



A. 5

B. 6

C. 8

D. 10

21. If A is the brother of B; B is the sister of C; and C is the father of D, how D is related to A?

A. Brother

B. Sister

C. Nephew

D. Cannot be determined

22. Choose the correct alternative that will continue the same pattern and replace the question mark in the given series.

1, 2, 3, 6, 9, 18, ?, 54

A. 18

B. 27

C. 36

D. 81

23. A grocer has a sale of Rs. 6435, Rs. 6927, Rs. 6855, Rs. 7230 and Rs. 6562 for 5 consecutive months. How much sale must he have in the sixth month so that he gets an average sale of Rs. 6500?

A. Rs. 4991

B. Rs. 5991

C. Rs. 6001

D. Rs. 6991

24. What was the day of the week on 28th May, 2006?

A. Thursday

B. Friday

C. Saturday

D. Sunday

25. Arrange the words given below in a meaningful sequence.

1. Police

2. Punishment

3. Crime

4. Judge

5. Judgment

A. 3, 1, 2, 4, 5

B. 1, 2, 4, 3, 5

C. 5, 4, 3, 2, 1

D. 3, 1, 4, 5, 2